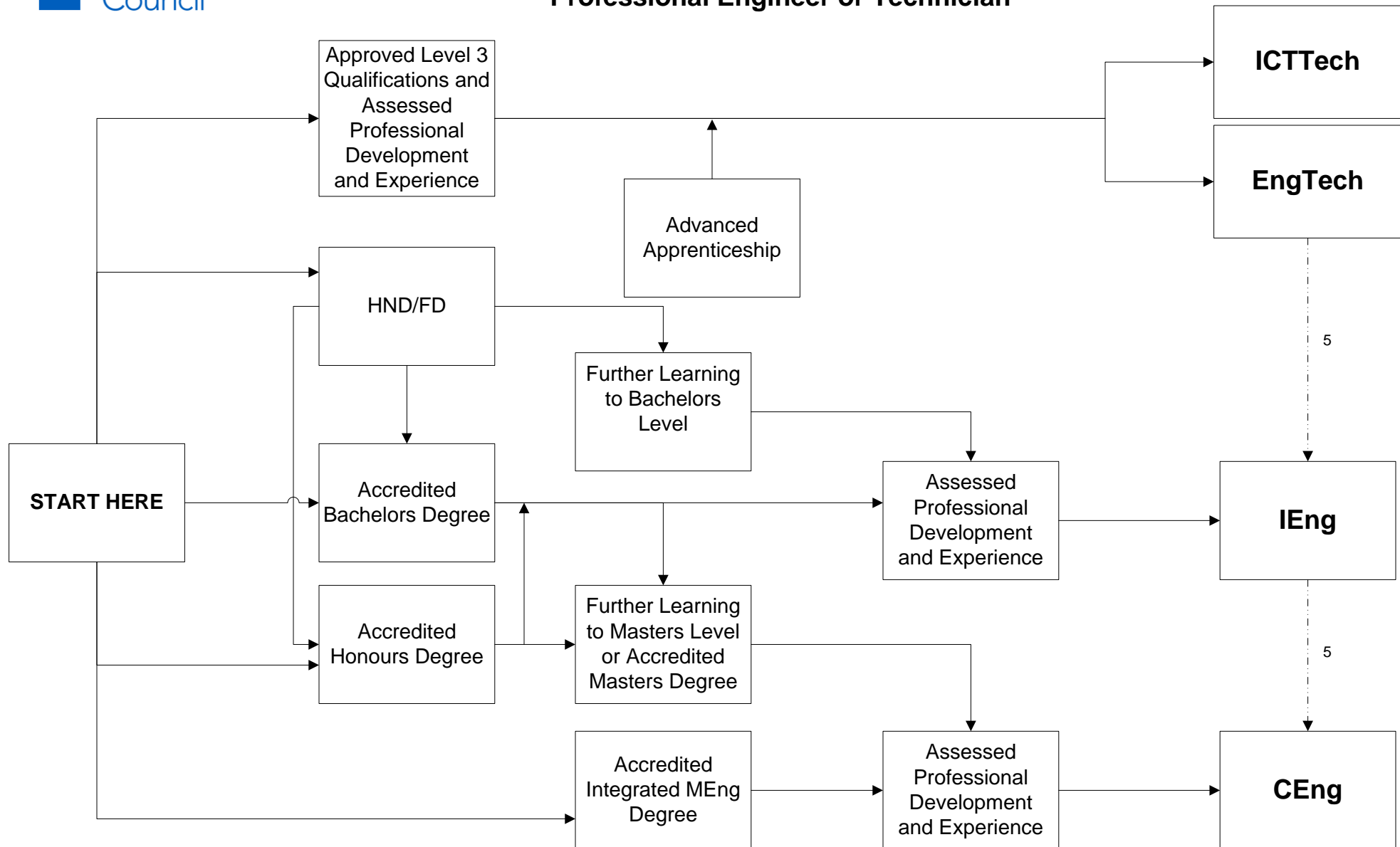


Standard Routes to Registration as a Professional Engineer or Technician



NOTES:

1. This is a summary diagram; for full information see UK-SPEC <http://www.engc.org.uk/professional-qualifications/standards/uk-spec>
2. In all cases registration is dependent on demonstrating competence and commitment at a professional review.
3. If you do not have the qualifications shown here there are other ways of demonstrating the necessary knowledge and understanding.
4. For details of qualification levels see <http://www.qcda.gov.uk> and <http://www.scof.org.uk>
5. It is possible to progress from one registration category to another.
6. The different elements shown here are not necessarily sequential and some may be undertaken concurrently.